



# LED DISK LIGHT

1/14

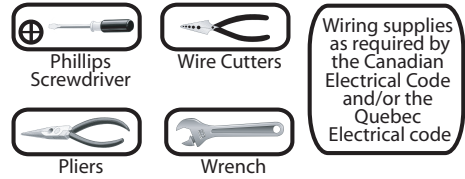
QUESTIONS OR CONCERNS CONTACT CANARM AT:  
 1-800-265-1833 (English) / 1-800-567-2513 (French)  
 Monday through Friday 8:00 AM to 5:00 PM E.S.T.

LED-SM6D



"INSTRUCTIONS PERTAINING TO RISK OF FIRE OR INJURY TO PERSONS"  
 "READ ALL INSTRUCTIONS"  
**"IMPORTANT SAFETY INSTRUCTIONS"**  
**"SAVE THESE INSTRUCTIONS"**

### TOOLS AND MATERIALS REQUIRED:



### SAFETY PRECAUTIONS:

1. TURN OFF ELECTRICAL POWER BEFORE STARTING INSTALLATION OF LIGHT FIXTURE.
2. THIS PRODUCT MUST BE INSTALLED IN ACCORDANCE WITH THE APPLICABLE INSTALLATION CODE BY A PERSON FAMILIAR WITH THE CONSTRUCTION AND OPERATION OF THE PRODUCT AND THE HAZARDS INVOLVED.
3. CAUTION – RISK OF FIRE. CONSULT A QUALIFIED ELECTRICIAN TO ENSURE CORRECT BRANCH CIRCUIT CONDUCTOR.

### PACKAGE CONTENTS

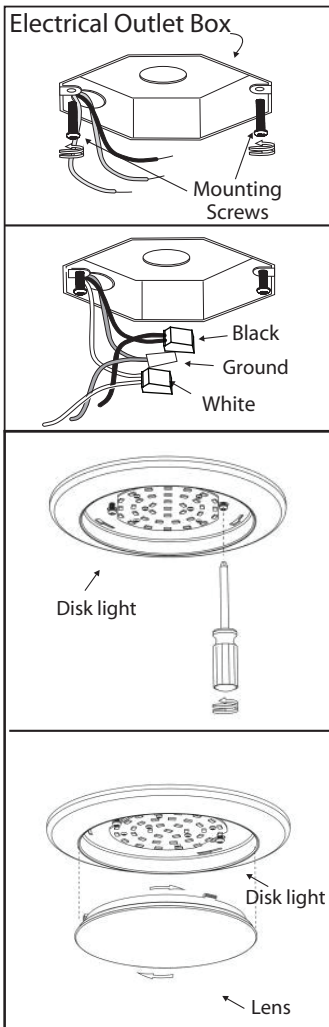
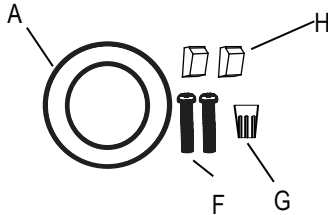
PART	DESCRIPTION	QTY
A	LED disk light	1
B	Mounting bracket (use with option #2)	1
C	Springs (use with option #2)	2
D	E26 lamp holder (use with option #2)	1

PART	DESCRIPTION	QTY
E	Quick connector (use with option #2)	1
F	Mounting screws	2
G	Wire nut	1
H	Power connector	2

THIS LED light is suitable to be dimmed by LUTRON # CTCL-153PD  
 Max # of Lamps per 600W Dimmer: 5pcs

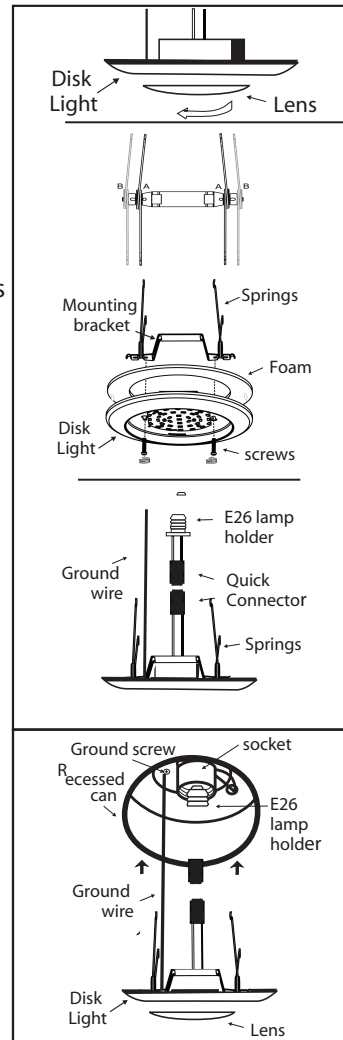
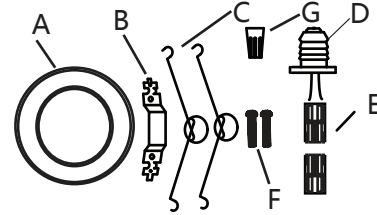
LED-SM4D-WT-C, LED-SM4D-BN-C, LED-SM6D-WT-C and LED-SM6D-BN-C are only flush mount.

### OPTION #1: FLUSH MOUNT



1. Prior to installation, install mounting screws into the junction box. Do not drive screws completely to the end of the junction box.
2. Connect supply wires to wires on fixture with wire nuts or push wires into Quick Connector. Connect white to white, black to black, and copper wire to copper wire as grounding connection.
3. With the lens off of fixture, attach disk light to mounting screws, turn fixture clockwise to lock. Tighten screws to firmly hold the fixture in place.
4. Complete the installation by twisting the lens on the disk light.

### OPTION #2: RETROFIT A RECESSED CAN



1. Prepare fixture for recessed installation.
  - Remove lens by twisting counter-clockwise
  - Place springs on mounting bracket then attach mounting bracket to disk light with screws
  - Insert wires into Quick Connector. Black to black and white to white.
2. Attach ground wire to ground screw in recessed can.
  - Turn E26 lamp holder into socket base.
  - Connect Quick Connectors
  - Tuck all wires into recessed can. Squeeze springs and push up into recessed can. Twist lens onto disk light.